

MIDSUMMER NEWS



July 2018

CHECK-IN FOR MMR 2018

Check-In Monday July 30, 2:00-7:00pm. Please do not arrive before 2:00pm. If you arrive after 7:00pm, your room keys will be at the front desk in Reid Campus Center.

Prentiss and Douglas residents go to your dorm to unload and move in. A Whitman Conference Aid will be in each dorm with keys. College House residents should pick up your key in Reid Campus Center. Douglas Residents arriving by air will be issued fans.

Go to Reid Campus Center to Check-In with MMR for:

- Registration packet
- 1-on-1 New Camper Orientation
- MMR Commemorative Wine Glasses
- Scrip for Fermata Bar
- Music folder
- Treasurer to settle your Balance.

Bring cash or checks or credit cards.

PARKING AT WHITMAN

Construction on the new dorm and dining hall will reduce the usual parking near Anderson and the Music building. Be prepared to unload, then move your car to the lot on the northwest corner of the campus behind the Science Building and Harper Joy Theater.

LATE WITHDRAWALS & REFUNDS

Our refund policy reflects our contractual obligations to faculty and Whitman College. Please review the policy at <http://musicalretreat.org/fees>.

MONDAY EVENING The Meet the Faculty Concert will be at 7:30pm in Chism Auditorium in the Hall of Music followed by a Meet & Greet Social.

TUESDAY SCHEDULE The Choral Faculty with the Faculty Orchestra (including invited campers) will run through the choral repertoire at 8:30 Tuesday morning in Chism Auditorium. Chorus members are encouraged to attend. All campers are invited.

Camper Led activities and Ad-Hoc chamber groups may also be planned for this time. The MMR Library of Chamber Music will be open.

This is an early opportunity for instrumental A, B, or C ensembles to meet for a run through. Use the cell phone numbers in your camper book or post signs in Reid to get in touch.

The first rehearsals for the Large Ensembles are scheduled for 10:15am.

CAMPER LED ACTIVITIES

MMR has been enriched over the years with activities organized by our campers. We have enjoyed spirited readings of string standards (Brandenburg Concerti, Water Music, Eine Kleine Nacht Music, Brahms Sextets), Early Music sessions (Bring recorders!). Tai Chi and evening drumming have been talked about.

If you would like to organize something similar, contact us for a room. Prepare your music and flyers to post, inviting others to participate.

The Facebook page is a good place to generate interest.

FERMATA BAR & HOSPITALITY SUITE

The Fermata Bar is held before dinner Tuesday, Wednesday, Thursday and Friday.

At-Home groups and ensembles that meet Tuesday morning are invited to perform at the Tuesday Fermata Bar.



Enjoy the fine wines of the Walla Walla region selected by Dan Williams and Wendy Wilhelmi for MMR. We will also serve house wines and artisan beer from the Brew Pub. Scrip will be sold at Check-In and at the Fermata Bar and may be redeemed ONLY at the Fermata Bar.

Beer and wine from the Fermata Bar may NOT be taken into the dining hall. MMR will also designate a Hospitality Suite Tuesday through Saturday. BYOB.

MMR LOGO WINE GLASS

Etched glasses featuring our logo will be available to purchase at check-in for \$20. Remember, wine tastes best in glass.

ON-CAMPUS TRANSPORTATION

Golf carts, driven by MMR volunteers, will be available to help you get around. This service is provided for campers and faculty with mobility problems and those transporting large instruments or other items.

Please contact Rick Hudson at rbhudson@comcast.net before or at camp to volunteer. Flexible Hours.



NEW FACULTY

Játik Clark, Principal Tuba of the Oregon Symphony since 1999, is active as an orchestral/chamber musician, soloist, and instructor/clinician both locally and nationally.

As an orchestral tubist, Játik has been invited to perform with several of the nation's finest orchestras, including the Chicago, Pittsburgh, Baltimore, Detroit, and Seattle Symphonies. His varied chamber music experience includes performances/recordings with Pink Martini, Big Horn Brass, Third Angle Music Ensemble, Chamber Music Northwest and the Chamber Music Society of Lincoln Center.

As a featured soloist, he has performed the Ralph Vaughan Williams *Tuba Concerto* twice with both the Oregon and Vancouver (WA) Symphonies, as well as the Corvallis-OSU Symphony. He also gave the Northwest premier of the Oregon Symphony's Principal Pops Conductor Jeff Tyzik's *Dance Suite for Tuba and Orchestra* with the Portland Columbia Symphony. Additionally, Játik was featured as a guest co-soloist with the "Pershing's Own" U.S. Army Band in Washington D.C.



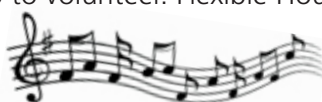
GUESTS & PUBLIC CONCERTS

Guests for regular meals may pay in the meal line. Guests who join in the Fermata Bar please make a donation.

Guests for the Saturday evening **Festival Finale Dinner Party**: purchase tickets from Sue Tierney or Jessica Stittsworth by noon on Thursday: \$55.00 which includes Saturday Tea.

Faculty Concert: Friday at 7:30pm at Chism Hall.

Festival Concert: Saturday at 5:00 pm at Cordiner Hall FREE!



HORIZON AIR DISCOUNT

Horizon Air has offered a discount for travel to and from MMR 2018. To get the benefit of this discount, book online at *AlaskaAir.com*, and input the Discount Code, **ECMZ222**, in the Discount Code box on the flights "Quick Search" box. You may also book by phone by calling the Group Desk. There is no ticketing fee when booking on *AlaskaAir.com*. A ticketing fee will be charged for bookings made by phone.

Make your own arrangements for transportation to and from the airport. We strongly urge you to plan in advance especially if you have an early Sunday morning flight.

CARPOOLS

Use the link in the sidebar of the MMR website to share transportation from Seattle or Portland to Walla Walla.

TRAVEL DIRECTIONS

Use your preferred online map service for directions to Whitman: address of Memorial Building / Clock Tower is 345 Boyer Avenue, Walla Walla, WA 99362. There is an excellent campus map at <https://www.whitman.edu/map>

INSTRUMENT INSURANCE:

Please arrange with your insurance company for coverage on your instrument(s) while at camp. MIDSUMMER MUSICAL RETREAT AND WHITMAN COLLEGE ARE NOT RESPONSIBLE FOR THE SAFETY OF YOUR INSTRUMENT.

SAFETY AND SECURITY AT MMR

The most secure place for your instrument is your own locked room. You will find unlocked storage during meal times near the Dining Hall.

It is important to maintain clear walkways in meeting and rehearsal rooms. Be sure to keep your unattended instruments and your cases out of high traffic areas.

CONTACTING MMR & WIFI AT MMR Beginning on July 31, we will check our email and voicemail messages only once a day. There are public computers in Reid. All Whitman buildings have WIFI.

QUICK FACTS

July 30 - August 5, 2018 at Whitman College, Walla Walla, WA
Call for information: 1-800-471-2419
E-mail address: midsummer@musicalretreat.org

CORPORATE ADDRESS:

Midsummer Musical Retreat
12345 Lake City Way NE, PMB 2255
Seattle, WA 98125

REGISTRATION ADDRESS:

Jessica Stittsworth, MMR Registrar
18775 NW Ukiah Street
Portland, OR 97229

www.musicalretreat.org

Whitman College information Conferences and Events 509-527-5251

Mailing Address: Addressee c/o Whitman College Summer Events
280 Boyer Avenue, Walla Walla WA 99362

LIST OF THINGS TO BRING TO CAMP:

If you are staying in a dorm Whitman will supply you with sheets, blankets, pillow, small bath towel and wash cloth.

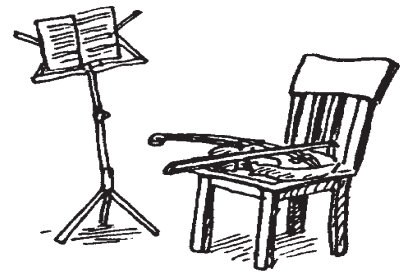
- **Your Sense of Humor**
- Music stand and Instrument(s)
- MMR name tag pouch to re-use
- **Re-usable water bottle!**
- Folk instruments (guitar, banjo, ukulele, mandolin, folk harp, bodhran, spoons, washboard, etc.)
- Recorders
- Extra music for pick up/ad hoc ensembles
- Clothes hangers
- Toiletries, including soap
- Prescription medications
- Bathrobe (bathrooms are down the hall)
- Informal comfortable clothes and shoes
- Props and costumes for Skit Night
- Warm sweater and/or jacket
- Nice (casual) outfit for final concert
- **Fans** Campers arriving by air will be provided a fan at check-in.
- Alarm clock
- Desk or reading light
- Large towel (Whitman's are small)
- Chair for Hospitality Suite

You may find it convenient to bring a **wheeled cart** for transporting your gear across campus.

FYI: There is a Safeway store with a pharmacy at 215 E. Rose Street.

MALLET LIST:

The list of recommended mallets and instruments to bring to MMR can be found on the Resources Menu on our website.



**VOLUNTEERS
NEEDED!**

MIDSUMMER MUSICAL RETREAT

Midwinter/Midsummer Musical Retreat Society
12345 Lake City Way NE PMB 255
Seattle, WA 98125

NON-PROFIT ORG.
U.S. POSTAGE
PAID
SEATTLE, WA
PERMIT NO. 581

RETURN SERVICE REQUESTED



JULY 30 - AUGUST 5, 2018